



# U.S. 26 RHODODENDRON DESIGN REFINEMENT PLAN

## PROJECT GOALS

We want to meet the transportation needs of Rhododendron residents, workers and visitors by:

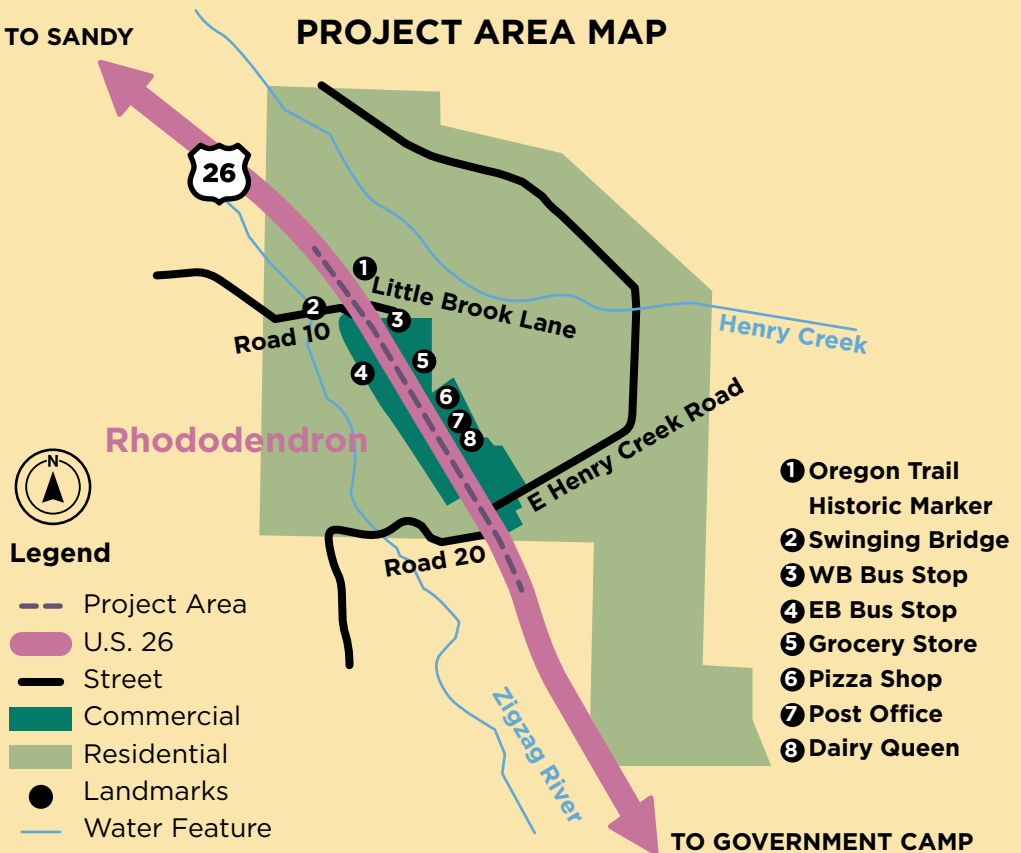
- Identifying the appropriate number of highway lanes.
- Identifying safest location(s) for people to cross the highway.
- Evaluating entry and exit points to adjacent destinations and businesses.
- Exploring multimodal improvements such as sidewalks, bus stops, bicycle lanes and designated driveways.
- Evaluating locations, designs and access to bus stops (e.g. Mt. Hood Express).
- Working with the public and key stakeholders to ensure a range of voices are considered.

## PROJECT BACKGROUND

The **U.S. 26 Rhododendron Design Refinement Plan** aims to address transportation safety, access, and connectivity issues for the community of Rhododendron. The community's desire to document existing concerns and set future goals was first described in the 2018 *Rhody Rising* visioning plan. With guidance from supporting design concept documents, analysis of existing conditions, and public engagement, the **U.S. 26 Rhododendron Design Refinement Plan** will improve transportation facilities for all users of U.S. 26. Visit the ODOT website to read more on *Rhody Rising* and Rhododendron Main Street Redevelopment Concept Plan.

TO SANDY

## PROJECT AREA MAP



## WHAT'S IN A REFINEMENT PLAN?

Refinement plans help us figure out how a project area will look and function and provide guidance on how we might implement a project.

## LEARN MORE AND GET INVOLVED!

[TinyURL.com/US26RhodyRefinement](https://TinyURL.com/US26RhodyRefinement)



## STAY IN TOUCH

Sandra Hikari

Oregon Department of Transportation - Major Projects Planner  
503-731-8246 | [sandra.y.hikari@odot.oregon.gov](mailto:sandra.y.hikari@odot.oregon.gov)

